

ZENZELE VALVES (PTY) LTD



**PRODUCT
RANGE**

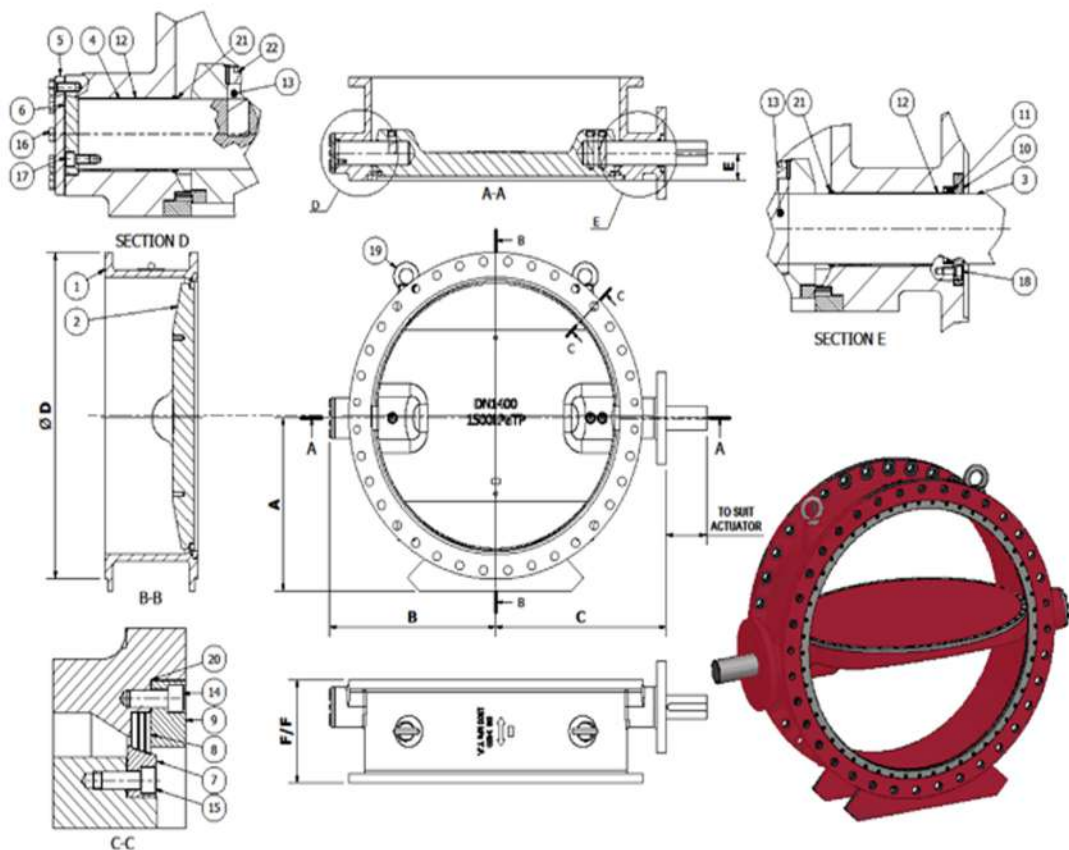


BRANDS

ZVM/ GUNRIC VALVES	4 - 9
PREMIER VALVES.....	10-12
AVK VALVES	13-16
WOUTER WITZEL	17-18
ORBINOX	19-21
ACCESSORIES	22-23

HIGH QUALITY VALVES AND ACCESSORIES

ZENZELE VALVES (PTY) LTD SA COMPANY CREATED THROUGH THE EFFORTS OF DEDICATED AND HISTORICALLY DISADVANTAGED MEN AND WOMEN MANUFACTURING AND SUPPLYING PRODUCTS AND SERVICES OF THE HIGHEST STANDARDS AND QUALITY.



PRODUCTS



TRIPLE ECCENTRIC METAL SEATED BUTTERFLY VALVE

TILTING DISC CHECK VALVE

SERIES NO.

6145

6146

DESCRIPTION

Gunric Triple Eccentric Butterfly Valve

Gunric Tilting Disc Check Valve

APPLICATIONS

Water, Waste Water, Cooling Water, Mine Water, Chemicals, Steam and Gas

Water, Waste Water, Cooling Water and Mine Water

MAIN FEATURES

Bubble Tight Shut, Fire Safe Certified Design, High Cycle, High Performance, Large Diameters, ISO 5211 Mount

Metal to Metal Seal, Drip Tight Shut Off, Horizontal and Vertical Installation, Auto closing, Assisted Closing

SIZES

80mm to 2500mm

80mm – 2500mm

OPTIONS

Seals available in

- Laminated metal
- Solid metal
- PTFE
- ANSI B16.10

Hydraulic Cylinder, Step Seat Design, Lever with counter weight(s), Integral or replaceable seat

Corrosion protection Carboline 891 - 250 micron, S/S welding on blade edge, Actuators, Gearboxes, Packaging, Ex-Works Price

VALVE RATING

PN2.5 – PN250, Class 125 to Class 1500

PN 2.5 – PN 40

TEMPERATURE RANGE

-35°C to +1000°C

-35°C to +425°C

BODY MATERIALS

Available in steel, ductile iron, stainless steel, nickel alloys, fabricated and castings available

Available in steel, ductile iron, stainless steel, nickel alloys, fabricated and castings available

APPLICABLE STANDARDS

BS EN 593, BS EN 1092, DIN 2630 – 2638, ANSI B16.5, API 605, API 609 & AWWA C207

BS EN 593, BS EN 1092, DIN 2630 – 2638, ANSI B16.5, API 605, API 609 & AWWA C207

METAL SEATED TRIPLE ECCENTRIC BUTTERFLY VALVE

Face to Face According to BS EN 593, ANSI B16.10, Flange drilling can accommodate BS EN 1092, DIN 2630-2638, ANSI B 16.5 API 605, B16.47, API 609 & AWWA C207. Pressure test according to BS EN 593

Double Flanged Triple Eccentric Butterfly Valve Materials.

Body & Disc: Fabricated carbon steel S355Jr, S.G. Iron BS2789 Gr.420, Cast Steel A216 WCB. Also Stainless Steel & Nickel Alloys

Shaft: Stainless Steel: 431(EN57)

Bearing bush: Glacier DU, Stainless Steel 316 (Chrome Carbide), Phosphor Bronze

Seal Ring: Laminated Stainless Steel

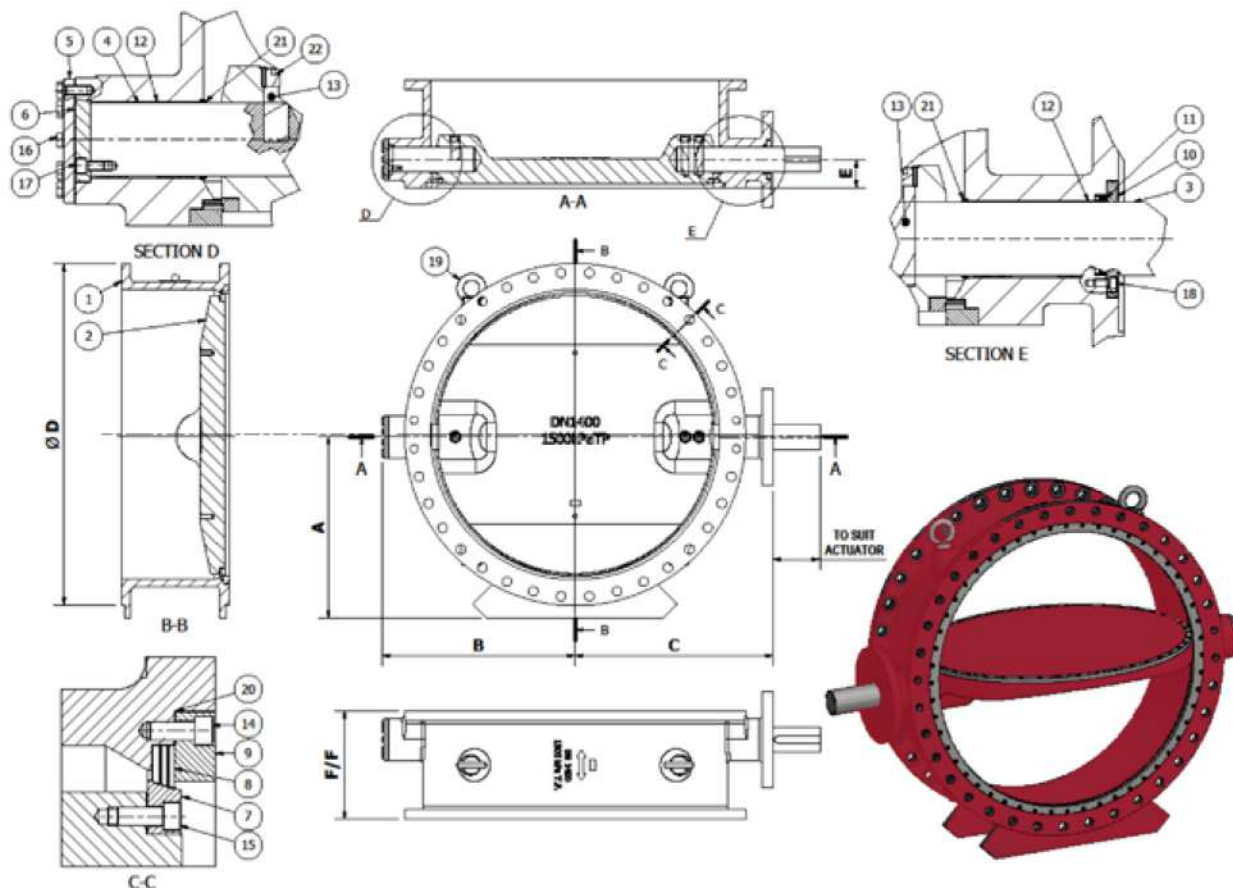
Seat Ring: Stainless Steel 304

Retaining Ring: Stainless Steel 316

Actuation: Valves are generally fitted with worm gearboxes for manual operation. They can also be fitted with electric, pneumatic or hydraulic actuators to suit output drives in accordance with ISO 5211.

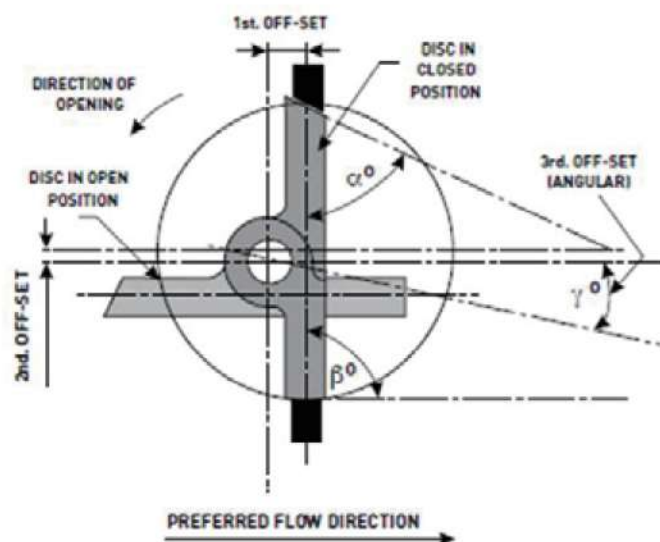


METAL SEATED TRIPLE ECCENTRIC BUTTERFLY VALVE SERIES 61/45



LEGEND

- | | |
|-------------------|-----------------|
| 1. Body | 15. Seat Screw |
| 2. Disc | 16. Cover Screw |
| 3. Drive Shaft | 17. Pad Screw |
| 4. Free End Shaft | 18. Gland Screw |
| 5. End Cover | 19. Eye Bolt |
| 6. Thrust Pad | 20. Gasket |
| 7. Seat Ring | 21. Wiper Seal |
| 8. Valve Seal | 22. Plug |
| 9. Retaining Ring | |
| 10. Gland Ring | |
| 11. Gland Seal | |
| 12. Bearing Bush | |
| 13. Pin | |
| 14. Retain Screw | |



METAL SEATED TILTING DISC CHECK VALVE SERIES 61/46

BB	Type	
01	Test Pressure (kPa) Body/Disc Material Dimension Remarks	1500 S.G.IRON – SANS 936 Gr 420/12 (BS 2789 Gr420/12) 0400-0600-0800 Flat face flanges
02	Test Pressure (kPa) Body/Disc Material Dimension Remarks	3500 S.G.IRON – SANS 936 Gr 420/12 (BS 2789 Gr420/12) 0400-0600-0700-0800-0900-1000-1400-1500-1800 Flat face flanges
03	Test Pressure (kPa) Body/Disc Material Dimension Remarks	5000 Cast Steel - A216 WCB 0150-0300-0450-0900 Raised face flanges O-ring groove on flanges ≤ 600
04	Test Pressure (kPa) Body/Disc Material Dimension Remarks	7000/8500 Cast Steel - A216 WCB 0600-0700-0900 Raised face flanges O-ring groove on flanges ≤ 600
05	Pressure Rating (kPa) Body/Disc Material Dimension	1000 M.S. SABS 1431/300WA (0200-1200) 0200-0250-0300-0350-0400-450-0500-600-800-0900-1000- 1050(NS)-1200- 1350(NS)-1400-1500(NS)-1800
06	Pressure Rating (kPa) Body/Disc Material Dimension	1000 M.S. SABS 1431/300WA (0200-1200) 0200-0250-0300-0350-0400-450-0500-600-800-0900-1000- 1050(NS)-1200- 1350(NS)-1400-1500(NS)-1800
07	Pressure Rating (kPa) Body/Disc Material Dimension	1000 ASTM A516 (Gr.70) 0200-0250-0300-0350-0400-0500-800-0900-1000-1050(NS)- 1200-1350(NS)-1500(NS)
08	Pressure Rating (kPa) Body/Disc Material Dimension	1600 M.S. SABS 1431/300WA 0200-0250-0300-0350-0400-0500-0600-0800
09	Pressure Rating (kPa) Body/Disc Material Dimension	2500 M.S. SABS 1431/300WA 0300-0400-0500-0600-0800-0900-1000
10	Pressure Rating (kPa) Body/Disc Material Dimension	4000 M.S. SABS 1431/300WA 0400-0450-0600-0800
11	Pressure Rating (kPa) Body/Disc Material Dimension	800 (CL125) S.G.IRON – SANS 936 Gr 420/12 (BS 2789 Gr420/12) 52",60",72",84"
12	Pressure Rating (kPa) Body/Disc Material Dimension	800 (CL125) SS 316L 52",60"
13	Pressure Rating (kPa) Body/Disc Material Dimension	2000 (CL150) M.S. SABS 1431/300WA 18",20",24",28",36",40",42",48",52",54"
14	Pressure Rating (kPa) Body/Disc Material Dimension	2000 (CL150) SS904L 40"
15	Pressure Rating (kPa) Body/Disc Material Dimension	5000 (CL300) M.S. SABS 1431/300WA 8"



METAL SEATED TILTING DISC CHECK VALVE SERIES 61/46

CC	Flanges Drilling
00	SANS 1123 – PN6
01	SANS 1123 – PN10
02	SANS 1123 – PN16
03	SANS 1123 – PN25
04	SANS 1123 – PN40
05	EN 1092-2 – PN6
06	EN 1092-2 – PN10
07	EN 1092-2 – PN16
08	EN 1092-2 – PN25
09	EN 1092-2 – PN40
10	Rand Water TP 1500 kPa
11	Rand Water TP 3500 kPa
12	Rand Water TP 5000 kPa
13	Rand Water TP 7000/8500 kPa

CC	Flanges Drilling
18	ANSI – CLASS 150
19	ANSI – CLASS 300
20	ANSI – CLASS 600
21	ANSI – CLASS 900
22	ANSI – CLASS 1500
23	SANS 1123 – PN2.5
24	BS4504 – PN2.5
25	BS4504 – PN6
26	BS4504 – PN10
27	BS4504 – PN16
28	BS4504 – PN25
29	BS4504 – PN40
30	AWWA C207 'CLASS D'
31	ANSI – CLASS 125

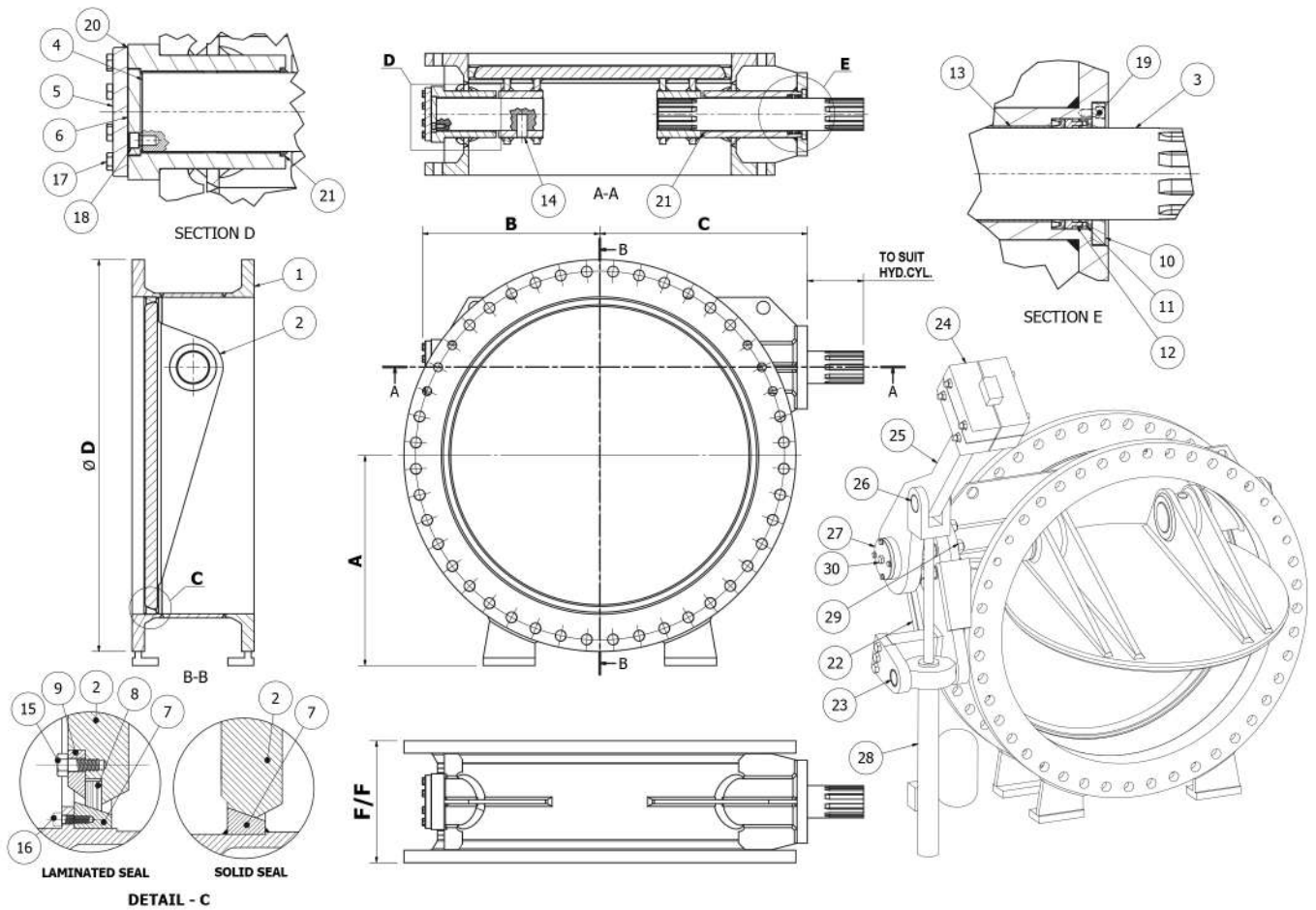
DD - Trim: Body Seat Ring / Valve Seal / Shaft / Shaft Bush				
	Body Seat Ring	Valve Seal	Shaft	Shaft Bush
35	ST/STEEL - 304	ST/STAINLESS – 316 (Laminated)	ST/STEEL - 431	Glacier – Steel & P.T.F.E.
36	ST/STEEL - 304	ST/STAINLESS – 316 (Laminated)	ST/STEEL - 431	Glacier – Bronze & P.T.F.E.
37	ST/STEEL - 304	ST/STAINLESS – 316 (Laminated)	ST/STEEL - 431	Phosphor Bronze
38	ST/STEEL - 304	ST/STAINLESS – DUPLEX (Laminated)	ST/STEEL - 431	Glacier – Steel & P.T.F.E.
39	ST/STEEL - 304	ST/STAINLESS – DUPLEX (Laminated)	ST/STEEL - 431	Glacier – Bronze & P.T.F.E.
40	ST/STEEL - 304	ST/STAINLESS – DUPLEX (Laminated)	ST/STEEL - 431	Phosphor Bronze



METAL SEATED TILTING DISC CHECK VALVE SERIES 61/46

E - Coating

1	Carboline – Carboguard 891 – 2 Pack Epoxy - 300 Mic. Internal, 250 Mic. External
2	Carboline – Carboguard 891 – 2 Pack Epoxy - 400 Mic. Internal, 300 Mic. External
6	Pickle & Passivate (Stainless steel valve only)
7	Carboline – Carboguard 891 – 2 Pack Epoxy - 250 Mic External
8	Carboline – Carboguard 891 – 2 Pack Epoxy - 300 Mic External
9	Carboline – Carboguard 891 – 2 Pack Epoxy - 400 Mic External
P	Carboline – Carboguard 550 – 2 Pack Epoxy - 400-500 Mic Internal & External
Q	Carboline – Carboguard 891 – 2 Pack Epoxy - 250 Mic. Internal, 200 Mic. External
R	Sigmaguard CSF 575 – 2 Pack Epoxy – 500 Mic – Internal & External
S	Silicone Aluminium 580 - 2 Pack Epoxy – 50-80 Mic. Internal & External



LEGEND

- | | | | |
|-------------------|-------------------------|-------------------|-----------------------|
| 1. Body | 9. Retaining Ring | 17. Cover Screw | 25. Counterweight arm |
| 2. Disc | 10. Gland Ring | 18. Pad Screw | 26. Clevis Pin |
| 3. Drive Shaft | 11. Gland Seal | 19. Gland Screw | 27. End Plate |
| 4. Free End Shaft | 12. Seal Expanding Ring | 20. Gasket | 28. Hyd. Cylinder |
| 5. End Cover | 13. Bearing Brush | 21. Wiper Seal | 29. Bracket Bolt |
| 6. Thrust Pad | 14. Pin | 22. Bracket | 30. End Plate Screw |
| 7. Seat Ring | 15. Retaining Screw | 23. Trunnion Bush | |
| 8. Valve Seal | 16. Seat Screw | 24. Counterweight | |

LOCALLY MANUFACTURED PRODUCTS



**PREMIER BOVING
FLANGED SOFT SEATED
BUTTERFLY VALVE**



**BUTTERFLY VALVE,
B125, B150**

SERIES NO.	6137	6136
DESCRIPTION	Boving/Von roll Eccentric butterfly valve	Wafer rubber lined BA butterfly valve
APPLICATIONS	Water , Waste water and cooling water	Cooling water for power generation
MAIN FEATURES	Replaceable body seat and soft seal on disc	Vulcanized soft seat body liner
SIZES	200mm to 3000mm	500mm to 1800mm
OPTIONS	Different disc soft seat materials- EPDM, Bune-N. Removable seat and welded body. Gear-box,lever and counter weight, Electric actuator, hydraulic actuator.	EPDM, Bune- N, Viton and Natural rubber linings. Gearbox, pneumatic actuator, electric actuator
VALVE RATING	PN 6- PN40	PN10 - PN 25
TEMPERATURE RANGE	-10°C to +70°C	-10°C to +70°C
BODY MATERIALS	Ductile iron	Ductile iron
APPLICABLE STANDARDS	BS and ISO	Eskom



BAKER CONTROL VALVE

PREMIER WEDGE GATE VALVE

PREMIER FLANGED CHECK VALVE

6139

6133

6134

Baker control valve

Metal Seated gate valve

Flanged single door check valve

Water and mine water with smaller particles

Water & waste water

Water & waste water

Self actuated pilot operated, 4:1 turn down ratio, hydraulic globe type

Channel Guides and gate shoes, Solid Wedge

Seat material options

50mm to 600mm

80mm to 1800mm

80mm to 500mm

Pressure reducing, pressure relief, flow control, level control and pump start up control, electronic control, diaphragm available in neoprene/ Viton/EPDM

Rising stem and non rising stem, Jacking, Screws, Bronze and stainless steel seat option, handwheel, gearbox, electric actuator

Seats in Bronze and stainless steel, Steel weld options

PN 6- PN50

PN10 - PN 64

PN10 - PN 64

-10°C to +70°C

-10°C to +70°C

-10°C to +70°C

Ductile iron and WCB

Ductile iron

Ductile iron, cast steel

Manufacturers standard

BS5163, DIN, SANS

Rand Water Board specification, BS5153

LOCALLY MANUFACTURED PRODUCTS



PREMIER MULTI DOOR CHECK VALVE



PREMIER DISPERSING VALVE

SERIES NO.

6135

6140

DESCRIPTION

Flanged multi door check valve

Fixed cone sleeve valve

APPLICATIONS

Water & waste water

Dam outlets, pump stations, scour

MAIN FEATURES

Three piece design, multi door, replaceable centre, lever arm and counter weight, Rapid closing times without slamming

Soft seal with tight shut-off

SIZES

500mm to 1800mm

150mm to 2500mm

OPTIONS

Bronze and stainless steel seats

Mild steel and stainless steel fabrication. Operated by manual gearbox, electric actuator or hydraulic actuator. Custom designs to suit particular applications

VALVE RATING

PN10 - PN 64

PN 10- PN 60

TEMPERATURE RANGE

-10°C to +70°C

-10°C to +70°C

BODY MATERIALS

Ductile iron

Mild steel and stainless steel

APPLICABLE STANDARDS

DWA

DWS (DWA)

ZENZELE VALVES



Flanged double eccentric butterfly valve	Large diameter resilient seated gate valve	Swing check valve	Resilient seated gate valves	Flanged resilient seated post indicator gate valve
---	---	--------------------------	-------------------------------------	---

Body and disc in ductile iron. Shaft, and pins in Stainless Steel. Fusion bonded epoxy coating acc to GSK.

Body and bonnet in ductile iron. Stem in stainless steel. Wedge in ductile iron. Operated by gearbox and hand wheel or actuator.

Body and bonnet in ductile iron. Stem and hinge in stainless steel. Lever and weight or lever and spring.

Body and bonnet in ductile iron. Stem in stainless steel. Wedge in ductile iron. Operated by gearbox and hand wheel or actuator.

Body and bonnet in ductile iron. Stem in stainless steel. Wedge in ductile iron vulcanized with AVK EPDM rubber. Fusion bonded epoxy coating acc. to GSK Operated by Post Indicator.

Specifics:	Specifics:	Specifics:	Specifics:	Specifics:
Size: DN200 - DN2200	Size: DN700 - DN800	Size: DN50 - DN600	Size: DN40 - DN800	Size: DN80 - DN300
Pressure: 10 + 16 + 25 Bar	Pressure: Up to 16 Bar	Pressure: Up to 16 Bar	Pressure: Up to 16 Bar	Pressure: 16 Bar
Temperature: 0 to +70°C	Temperature: 0 to +70°C	Temperature: 0 to +70°C	Temperature: 0 to +70°C	Temperature: Up to +70°C



Flanged resilient seated wrench neck gate valve

Body and bonnet in ductile iron. Stem in stainless steel. Wedge in ductile iron vulcanized with AVK EPDM rubber. Fusion bonded epoxy coating acc. to GSK. Operated by stem extension.

Flanged resilient seated gate valve OS&Y

Body, bonnet, yoke and hand wheel in ductile iron. Stem in copper alloy. Wedge in ductile iron vulcanized with AVK EPDM rubber. Fusion bonded epoxy coating acc. to GSK. Operated by hand wheel.

Flanged resilient seated pin indicator gate valve

Body and bonnet in ductile iron. Stem in stainless steel. Wedge in ductile iron vulcanized with AVK EPDM rubber. Fusion bonded epoxy coating acc. to GSK. Operated by hand wheel.

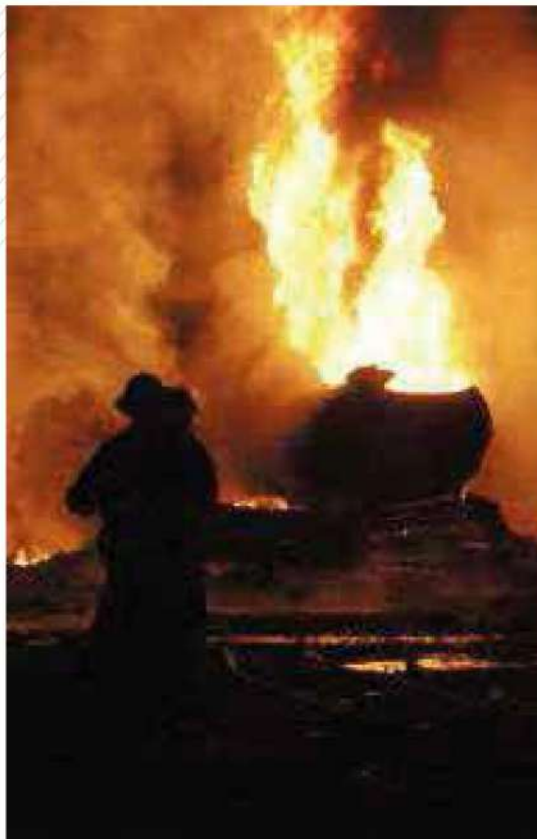
Flanged concentric butterfly valve

Body and bonnet in ductile iron. Stem in stainless steel. Wedge in ductile iron vulcanized with AVK EPDM rubber. Fusion bonded epoxy coating acc. to GSK. Operated by hand wheel.

Series 06/44 Flanged gate valve PN10/16

Flanged gate valve for sewer applications to max. 35°C. Designed according to EN 1074 part 1 & 2 and EN 1171; Standard Flange drilling to EN1092-2 (ISO 7005-2), PN 10/16; Hydraulic test according to EN 1074-1 and 2 / EN 12266; Seat: 1.1 x PN (in Bar), Body: 1.5 x PN (in Bar) Operation torque test.

Specifics:	Specifics:	Specifics:	Specifics:	Specifics:
Size: DN65 - DN300	Size: DN65 - DN300	Size: DN50 - DN400	Size: DN50 - DN300	Size: DN50 - DN400
Pressure: 16 Bar	Pressure: 16 Bar	Pressure: 10 + 16 Bar	Pressure: 10 + 16 Bar	Temperature: 0 to +35°C
Temperature: 0 to +70°C	Temperature: 0 to +70°C	Temperature: 0 to +70°C	Temperature: 0 to +70°C	



Series 29/388 Underground fire hydrant PN16

Complies with requirements of BS 750:2006 and BS EN1074-2:2004 and EN143339:2005, underground hydrants; also to BS EN1074-6 for portable drinking water (for water and neutral liquids to max 70°C). London Round.

Series 29/288 Underground fire hydrant PN16

Complies with requirements of BS 750:2006 and BS EN1074-2:2004 and EN143339:2005, underground hydrants; also to BS EN1074-6 for portable drinking water. London Round.

Series 910/11 Y-Strainer PN16

Designed according to manufacturer's standards. Face to face according to EN558 Table 2. Standard flange drilling to EN1092-2 (ISO 7005-2) PN16.

Specifics:	Specifics:	Specifics:
Size: DN80	Size: DN80	Size: DN50 - DN300



**Series 01/80
Socket ended RSV
gate valve PN16**

Designed according to EN 1074 part 1 & 2 and EN 1171; Hydraulic test according to EN 1074-1 & 2 / EN 12266; Epoxy coating to DIN 30677-2; GSK Approved; EURO socket ends, NRS. (for drinking water and neutral liquids to max 70°C).

Specifics:

Size:
DN50 - DN400

Temperature:
0 to +70°C

**Series 43/60
RSV Flanged gate
valve PN10/16**

Designed according to EN1074 part 1 & 2 and EN1171; Face to Face according to SABS 664/1989.A; Standard flange drilling to EN1092 (ISO 7005-5); Hydraulic test according to SABS 664; Non-Rising Spindle; Epoxy coating to DIN 30677-2 and AVK Guidelines. Available in RHC and LHC. (for drinking water and neutral liquids to max 70°C).

Specifics:

Size:
DN50 - DN300

Temperature:
0 to +70°C

**Series 02/20
RSV Flanged gate
valve PN10/16**

Designed according to EN1074 part 1 & 2 and EN1171; Face to Face according to EN 558 Table 2; Basic Series 3; Standard flange drilling to EN1092 (ISO 7005-5); Hydraulic test according to EN 1074 and 2/ EN 12266; Epoxy coating to DIN 30677-2; GSK approved. (for drinking water and neutral liquids to max 70°C).

Specifics:

Size:
DN50 - DN400

Temperature:
0 to +70°C

**Series 06/30
RSV Flanged gate
valve PN10/16**

Designed according to BS5150 / DN 3202 Part 1; Non-Rising Spindle; Standard Flange drilling ISO 7005-2; RHC and LHC; Face to Face to BS 5150/en10741&2; Epoxy coated according to DIN 30677-2 and GSK Guidelines; Closing direction: RHC & LHC.

Specifics:

Size:
DN50 - DN800

Temperature:

**Series 02/60
RSV Flanged gate
valve PN10/16**

Designed according to EN1074 part 1 & 2 and EN1171; Face to Face according to EN 558 Table 2 Basic Series 15; Standard flange drilling to EN1092 (ISO 7005-5); Hydraulic test according to EN 1074-1 and 2/EN 12266; Epoxy coating to DIN 30677-2 and AVK Guidelines. Closing direction: RHC and LHC. (for drinking water and neutral liquids to max 70°C).

Specifics:

Size:
DN400 - DN500

Temperature:
0 to +70°C



**Series 06/35
RSV Flanged gate
valves with PIN
indicator and
handwheel PN10/16**

Designed according to EN1074 part 1 & 2 and EN1171; Face to Face according to EN 558 Table 2 Basic Series 14; Standard flange drilling to EN1092 (ISO 7005-5); Hydraulic test according to EN 1074-1 and 2/EN 12266; Epoxy coating to DIN 30677-2 and AVK Guidelines. Closing direction: RHC (for fire protection applications to Max of 70°C).

Specifics:

Size:
DN50 - DN300

Temperature:
0 to +70°C

**Series 21/60
RSV Flanged gate
valve PN25**

Designed according to BS5163 & EN1074 Part 1& 2; Standard Flange drilling len1092-2 (ISO 7005-2); Face to Face to EN558 Table 2 basic series 3; Closing direction: RHC & LHC; Stem Sealing exchangeable under pressure.

Specifics:

Size:
DN50 - DN400

Temperature:

**Series 02/67
RSV Flanged gate
valve PN25**

Designed according to EN1074 part 1 & 2 and EN1171; Face to Face according to EN 558 Table 2 Basic Series 15; Standard flange drilling to EN1092 (ISO 7005-5); Hydraulic test according to EN 1074-1 and 2 / EN 12266; Epoxy coating to DIN 30677-2 and AVK Guidelines. (f or drinking water and neutral liquids to max 70°C).

Specifics:

Size:
DN50 - DN300

Temperature:
0 to +70°C

**Series 32/89
(SABS 664)
Victaulic rising gate
spindle valve PN16**

Designed according to SABS 664 Specification; Rising spindle ; Epoxy Coated Internally and Externally to DIN 30677-2.

Specifics:

Size:
DN50 - DN300

Temperature:

**Series 32/89
(SABS 665)
Victaulic rising gate
spindle valve PN16**

Designed according to SABS 664 Specification; Rising spindle ; Epoxy Coated Internally and Externally to DIN 30677-2.

Specifics:

Size:
DN50 - DN300

Temperature:
0 to +70°C



**Series 32/82
Plain ended gate
valve PN16**

Designed according to SABS 664/1989; WITH SPIGOT ENDS FOR ASBESTOS CEMENT PIPES; Epoxy Coated Internally and Externally to DIN 30677; Closing available in RHC & LHC.

**Series 55/30
RSV Flanged gate
valves PN10/16
(450mm - 600mm)**

Designed according to DIN / EN; Face to Face according to EN 558 TABLE 2 BASIC SERIES 15; Standard flange drilling to EN1081-2; GSK guidelines; Hydraulic test according to EN 1074-1.

**Series 37/50
Metal seated gate
valve PN10/16**

Designed according to EN 1074 part 1 & 2; Flange drilling to EN 1092-2 (ISO 7005-2); Face to Face to EN558-1 series 3; Epoxy Coated according to DIN 30677-2 and GSK approved. (for water, sewage and neutral liquids to max 70°C).

**Series 37/80
Metal Seated Gate
Valve PN25**

Designed according to EN 1074 part 1 & 2; Flange drilling to SANS 1123; Face to Face to SANS 664-1 / EN558 Table 2 series 19; Available in RHC and LHC (for water, sewage and neutral liquids to max 70°C).

**Series 21/66
RSV gate valve with
rising stem and
handwheel PN25**

Designed according to EN 1074 part 1 & 2; Flange drilling to EN 1092-2 (ISO 7005-2); Face to Face according to EN 558 table 2 basic series 3; Hydraulic test according to EN1074-2 (for water, sewage and neutral liquids to max 70°C).

Specifics:

Size:
DN50 - DN300

Temperature:

Specifics:

Size:
DN500 - DN600

Temperature:

Specifics:

Size:
DN50 - DN300

Temperature:
0 to +70°C

Specifics:

Size:
DN50 - DN300

Temperature:

Specifics:

Size:
DN50 - DN400

Temperature:
0 to +70°C



**Series 21/89
RSV gate valve with
rising stem and
handwheel PN16**

Designed according to EN 1074 part 1 & 2; Flange drilling to EN 1092-2 (ISO 7005-2); Face to Face according to EN 558 table 2 basic series 3 (for water, sewage and neutral liquids to max 70°C).

**Series 41/6X
Resilient seated
swing check
valve PN16**

Face to face dimension to DIN 3202-F6 / BS 5153:1974 (1992); Flanges and drilling to ISO7005-5 (EN1092-2:1997, DIN 2501). Epoxy coated internally and externally to DIN 30677.

**Series 53/3X
Ball check valve
PN10**

Ball check valve Ductile iron NBR rubber; standard flange drilling to EN1092-2 (ISO7005-2); Self cleaning function.

**Series 851/20
Double office (dual
function) air valve
with VNR - Vent
Non-Return PN16**

Air valve designed according to EN1074-4; Flanges according to EN1092-2 (ISO7005-2); Bolts: A4 Stainless steel; Epoxy coated according to DIN30677-2 and GSK approved (For portable water to max of 70°C).

**Series 851/10
Double office (dual
function) air valve
with VNR - Vent
Non-Return PN25**

Air valve designed according to EN1074-4; Flanges according to EN1092-2 (ISO7005-2); Bolts: A4 Stainless steel; Epoxy coated according to DIN30677-2 and GSK approved (For portable water to max of 70°C).

Specifics:

Size:
DN50 - DN400

Temperature:
0 to +70°C

Specifics:

Size:
DN50 - DN300

Specifics:

Size:
DN50 - DN400

Specifics:

Size:
DN50 - DN150

Temperature:
0 to +70°C

Specifics:

Size:
DN50 - DN150

Temperature:
0 to +70°C



RANGE EVS
Flangeless wafer type

In line installation
Design pressure max. 16 bar.

RANGE EVCS
Alignment lug wafer type

In line installation
Design pressure max. 16 bar.

RANGE EVBS
Semi-lug wafer type

In line and dead end
installation
Design pressure max. 16 bar.

RANGE EVBLS
Semi-lug wafer type
with long neck

In line and dead end
installation
Design pressure max 16 bar.
Long neck for insulation

RANGE EVTLS
Tapped lug wafer type

In line and dead end
installation
Design pressure max. 16 bar.
(25 bar on request)

Specifics:

DN 50 – 1400 (2" – 56").

Specifics:

DN 50 – 300 (2" – 12").

Specifics:

DN 50 – 1200 (2" – 12").

Specifics:

DN 50 – 800 (2" – 8").

Specifics:

DN 50 – 1200 (2" – 48").



RANGE EVUS
U-section wafer type
(with full strength)

In line and dead end
installation
Design pressure max. 10 bar.

RANGE EVML
Single flanged wafer
type (long)

In line and dead end
installation
Design pressure max. 16 bar.

RANGE EVMS
Single flanged wafer

In line and dead end
installation
Design pressure max. 16 bar.
Bi-directional tight shut-off

RANGE EVFS
Double flanged type

In line and dead end
installation
Design pressure max. 16 bar.
Design pressure max. 25 bar.

RANGE EVFL
Double flanged type
(long)

In line and dead end
installation
Design pressure max. 16 bar.

Specifics:

DN 600 – 2200 (24" – 88").

Specifics:

DN 50 – 800 (3" – 32").

Specifics:

DN 350 – 1000 (14" – 40").

Specifics:

DN 50 – 2000 (2" – 80").
DN 50 – 1000 (2" – 40").

Specifics:

DN 50 – 1500 (2" – 60").



LEVER
Quick manual valve operation

Design:
Lift and turn operation.
Spring activated locking.
Lever parallel to disc.
Notch plate for 10 positions.

Specifics:
Valve sizes up to DN 300 (12").

WORMGEAR
Easy manual valve operation

Easy manual valve operation
Design:
Self locking wormgearing.
Handwheel of T-Key operation.
Adjustable end stops.
Position indicator.
Different options available.
Note for sizes <DN 400:
When wormgears are mounted by third parties, an intermediate flange plate should be used between mounting flange and wormgear.
These plates can be supplied by Wouter Witzel EuroValue®

Specifics:
Valve sizes up to DN 2200 (88").



Heading 9pt bold

Flangeless wafer type
Design:
Bonded rubberseat in body.
Self acting rotating double disc.
Design pressure 16 bar.
Uni-directional tight shut-off

Specifics:
DN 50 – 500 (2" – 24")



ZENZELE VALVES | ORBINOX



EX/EK Wafer knife gate valve

General service (solid loaded fluids): pulp & paper, waste water, solids...

WORKING PRESSURE
 DN 50-250 (2"-10") 6 bar
 DN 300-400 (12"-16") 5 bar
 DN 450 (18") 4 bar
 DN 500-600 (20"-24") 2 bar
 DN 700-1200 (28"-48") 10 bar

Specifics:

SIZES
 DN 50 to DN 1200 (2" to 48")

FLANGE DRILLING
 PN10
 ANSI 150; BST "D"
 Other on request

ET Knife gate valve acc. To MSS SP 82

General service (solid loaded fluids): pulp & paper, waste water, solids...

WORKING PRESSURE
 DN 50-600 (2"-24") 10 bar (150psi)
 DN 750 (30") 7 bar (100psi)
 DN 900 (36") 7 bar (100psi)

Specifics:

SIZES
 DN 50 to DN 900 (2" to 36")

FLANGE DRILLING
 PN10
 ANSI 150
 Other on request

TL/TK Through conduit knife gate valve

Solid fluids (concentration >5%): pulp, rejects, solids....

WORKING PRESSURE
 DN 50-125 (2"-5") 8 bar
 DN 150-250 (6"-10") 6 bar
 DN 300-400 (12"-16") 5 bar
 DN 450 (18") 4 bar
 DN 500-600 (20"-24") 2 bar
 DN 700-1000 (28"-40") 10 bar

Specifics:

SIZES
 DN 50 to DN 1000 (2" to 40")

FLANGE DRILLING
 PN10
 ANSI 150
 Other on request

CR Round & Square port knife gate valve

Contaminated pulp and difficult conditions (junk traps, cleaners...)

WORKING PRESSURE
 DN 100-400 (4"-16") 4 bar
 DN 500-600 (20"-24") 7 bar

Specifics:

SIZES
 DN 100 to DN 600 (4" to 24")

FLANGE DRILLING
 PN10
 ANSI 150
 Other on request

DT Double gate knife gate valve

Contaminated pulp of very high concentration (pulp, rejects...)

WORKING PRESSURE
 DN 100-250 (4"-10") 6 bar
 DN 300-400 (12"-16") 5 bar
 DN 450 (18") 4 bar
 DN 500-600 (20"-24") 10 bar

Specifics:

SIZES
 DN 100 to DN 600 (4" to 24")

FLANGE DRILLING
 PN10
 ANSI 150
 Other on request





EB
Bi-directional knife gate valve

General service (solid loaded fluids) waste water, sludges...

WORKING PRESSURE
Monoblock
DN 50-250 (2"-10") 10 bar
DN 300-400 (12"-16") 6 bar
DN 450 (18") 5 bar
DN 500 (20") 4 bar
Split body
DN 600 (24") 4 bar
DN 700-1200 (28"-38") 2 bar

HB
Bi-directional high pressure knife gate

General service (solid loaded fluids) waste water, sludges...

WORKING PRESSURE
DN 50-300 (2"-12") 16 bar

VG
Rubber sleeve knife gate valve

Abrasive slurries (mining, petrochemical...)

WORKING PRESSURE
DN 50-400 10 bar
2" - 16" 150psi
DN 450-600 6 bar or 10 bar
150psi
5 bar
18" - 24" DN 700-900 75 psi
28" - 36" Other on request

XC
Hopper shape knife gate valve

Bulk handling (powder, pellets...) silo outlet applications

WORKING PRESSURE
Seat opposite pressure
DN 50-250 (2"-10") 3 bar
DN 300-400 (12"-16") 2 bar
DN 450 (18") 1.5 bar
DN 500-600 (20"-24") 1 bar

BC
Square port knife gate valve

General service (solid loaded fluids) bulk handling

WORKING PRESSURE
150x150 (6"x6"-600x600 (24"x24")) 1 bar

Specifics:

SIZES
DN 50 to DN 1200 (2" to 48")

FLANGE DRILLING
PN10; ANSI 150
Other on request

Specifics:

SIZES
DN 50 to DN 300 (2" to 12")

FLANGE DRILLING
PN16
Other on request

Specifics:

SIZES
DN 50 to DN 900 (2" to 24")

FLANGE DRILLING
PN10; ANSI 150
Other on request

Specifics:

Specifics:



RM
Tilting disc check valve

Solid loaded fluids pulp & paper, waste water

3/4V
3 / 4 way valve

Pulp & paper

AT
Split body knife gate valve

Demanding applications pulp & paper, food industry...

VP
Split body bi-directional knife gate

Demanding applications bi-directional

TP
Sampling valve

Pulp & paper

Specifics:

SIZES
DN 40 to DN 900 (1 1/2" to 36")

WORKING PRESSURE
Up to 40 bar
Depending on size

Specifics:

SIZES
DN 80 to DN 300(3" to 12")

WORKING PRESSURE
10 bar

Specifics:

SIZES
DN 50 to DN 1000(2" to 40")

WORKING PRESSURE
Up to 10 bar
Depending on size

Specifics:

SIZES
DN 50 to DN 600(2" to 24")

WORKING PRESSURE
Up to 10 bar
Depending on size

Specifics:

SIZES
DN 20/40(1"/1 1/2")

WORKING PRESSURE
10 bar



CW
Single wedge knife gate valve

Solid loaded / hazardous fluids
high pressure

Specifics:

SIZES
DN 80 to DN 900 (3" to 36")

WORKING PRESSURE
Up to 64 bar
Depending on size



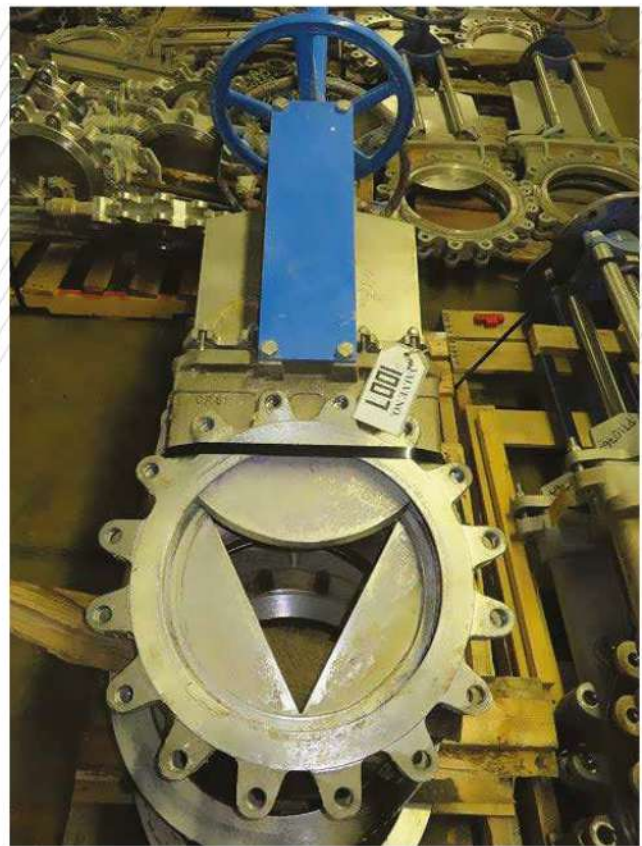
WS
Fabricated single wedge knife gate valve

Solid loaded / hazardous fluids
high pressure

Specifics:

SIZES
Up to DN 2400 (96")

WORKING PRESSURE
Up to 25 bar
Depending on size



KP
Transmitter isolation valve

SIZES
DN 80(3")

WORKING PRESSURE
1 bar



SD
Swing disc valve

Bulk handling abrasive services (fly ash, etc.)

Specifics:

SIZES
DN 100 to DN 300 (4" to 12")

WORKING PRESSURE
Up to 3 bar



SG
Swing knife gate valve

Bulk handling demanding applications

Specifics:

SIZES
DN 100 to DN 300 (4" to 12")

WORKING PRESSURE
Up to 3 bar



3VY
3-way diverter valve

Bulk handling

Specifics:

SIZES
DN 50 to DN 250 (2" to 10")

WORKING PRESSURE
Up to 3 bar



BONNETED VALVES

Solid loaded / hazardous fluids available for EX, ET, TL, XC

Specifics:

SIZES
Up to DN 600 (24")

WORKING PRESSURE
Up to 10 bar
Depending on size

Accessories | Couplings & Flange Adaptors

Unifit Couplings

Wide Range Couplings for plain ended pipe



Long Barrel Unifit Couplings

For connection of GRP & HDPE pipe or for large setting gaps



Unifit Premier Couplings

For connection of GRP & HDPE pipe or for large setting gaps



Dedicated Couplings for PVC

DediFit Couplings for quick connections of PVC pipe



Dedicated Large Dia. Couplings

For connection of plain ended pipe up to DN3000mm



High Pressure Couplings

Couplings for PN25 & PN40 applications.



Unifit Step Couplings

For connecting pipes of different material & nominal bore



Universal Flange Adaptors

With wide sealing tolerance and universal flange drilling



Flange Adaptors

For any flange drilling up to PN64 and any sizes up to DN3000mm



Restrained Flange Adaptors

For any flange drilling up to PN64 and sizes up to DN3000mm



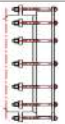
Dismantling Joints

Double flanged fittings allowing 50mm of setting adjustment



Half Couplings

Socketed end for welding onto plain ended steel fittings



End Caps

Supplied with sockets for pipeline pressure testing



Junior Couplings

To join plain ended galvanized mild steel pipe



EvoGrip Couplings

Fully restrained couplings for plain ended HDPE pipe



PolyGrip Couplings

Fully restrained couplings for plain ended HDPE & PVC pipe



PolyGrip Adaptors

Fully restrained flange adaptors for HDPE & PVC pipe



G-Flex Gripper Coupling

Fully restrained joints for metallic pipework



G-Flex Install Coupling

High performance SS couplings for plain ended pipe



Low Pressure Coupling

Dedicated SS couplings for large diameter low pressure applications



Zenzele Valves | Pipes and Pipe Fittings



Steel Pipe & Tubing



Steel Pipe Fittings



Steam Pipe Fittings



PVC PIPE & Fittings



PVC Pressure Fittings



HDPE Polyethylene Piping



Mild Steel Flanges



Water meters



Valves Industrial



Buttweld Fittings



Pipe Flanges



HDPE Pipe Fittings



Civils Products



Uncoated / Galvanized Pipes



Pumps

CONTACT US

SALES

info@zenzelevalves.co.za

sales@zenzelevalves.co.za

FOR MORE INFORMATION VISIT

zenzelevalves.co.za

FOR ALL OTHER QUERIES

1165 DOMKRAG STREET, ROBERTVILLE,
FLORIDA,
ROODEPOORT

CONTACT NUMBER:

+27 11 028 4221

+27 11 474 6180

EMAIL:

sales@zenzelevalves.co.za

